

# Using *EasyVFR* to export Approach Plates to your Dynon Skyview.

---

If you have a PocketFMS Frequent Flyer Membership (FFM), you can use *EasyVFR for Windows* or *EasyVFR for OS X* to export Approach Plates to your Dynon SkyView system. Here's a step-by-step on how to achieve that.

## 1. Install a PocketFMS Dynon Dataset on your SkyView unit.

You can only use the Plates if you're using a PocketFMS Dataset on your SkyView(s). If you wish to have Plates on your SkyView(s), it is important that:

1. You have a PocketFMS Frequent Flyer Membership (FFM) and
2. You have installed the PocketFMS Dynon Dataset on your SkyView system.

Details on obtaining such a PocketFMS Dynon Dataset or an FFM licence are found at <http://www.pocketfms.com/Dynon>. Full installation instructions can be found at <http://www.pocketfms.com/Dynon/Checklist.pdf>.

## 2. Install and set up *EasyVFR for Windows* or *EasyVFR for OS X*.

Downloading can be done from:

<http://www.pocketfms.com/EasyVFR/Windows.asp>  
<http://www.pocketfms.com/EasyVFR/OSX.asp>

Windows version  
OS X version

Installation instructions are found at:

[http://www.pocketfms.com/EasyVFR/Tutorial/tut-Install\\_Win.asp](http://www.pocketfms.com/EasyVFR/Tutorial/tut-Install_Win.asp)  
[http://www.pocketfms.com/EasyVFR/Tutorial/tut-Install\\_OSX.asp](http://www.pocketfms.com/EasyVFR/Tutorial/tut-Install_OSX.asp)

Windows version  
OS X version

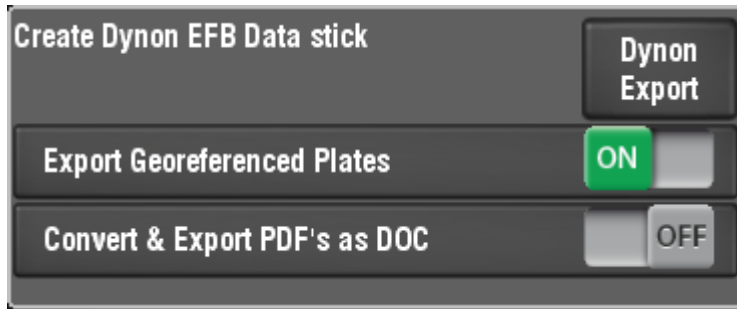
## 3. Populate your EFB in *EasyVFR*.

The total number of documents that can be loaded into *EasyVFR*'s Electronic Flight Bag (EFB) is so large it would be highly impractical to have them all downloaded on your system. Therefore, you should populate your EFB with only those documents you consider to be interesting. Once these have been downloaded you can put them on a memory stick to use on your SkyView system.

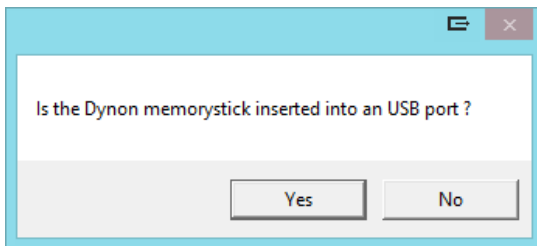
To learn how to populate your own personal EFB see <http://www.pocketfms.com/EasyVFR/Tutorial/tut-EFB.asp>

#### 4. Prepare the memory stick.

By now you should know your way around the EFB tab in EasyVFR. You probably already noticed the [Dyon Export] panel on that tab (though it's only visible if you have a SkyView):

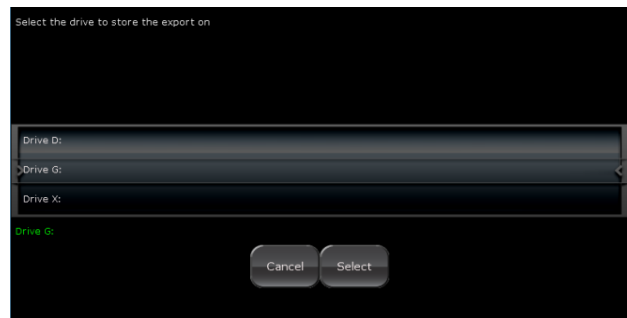


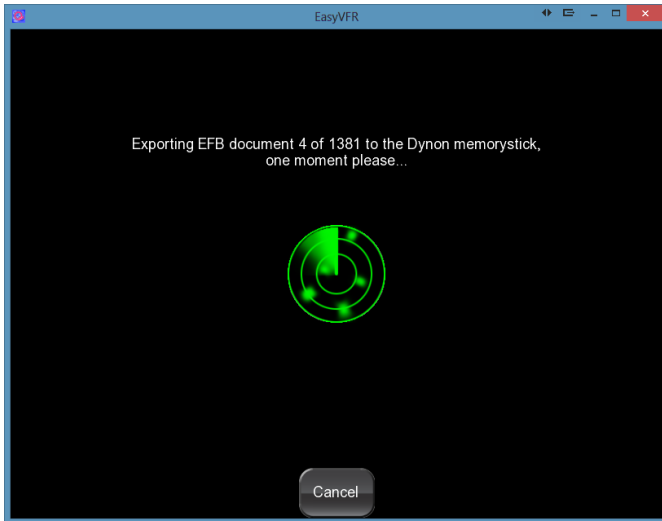
For reasons of memory stick size, you may not want to export the georeferenced plates, but if you slide that to ON you can overlay the various approach plates on your SkyViews. Sliding the 'PDFs as DOC' switch to ON will convert the PDF files in the EFB to Dyon Docs before pumping them to the memory stick. Having both sliders to OFF disables the [Dyon Export] button.



Tap the [Dyon Export] button and make sure your Dyon memory stick is inserted into your computer. Then click [Yes] to the question. Note that the USB stick should always be formatted as FAT32!

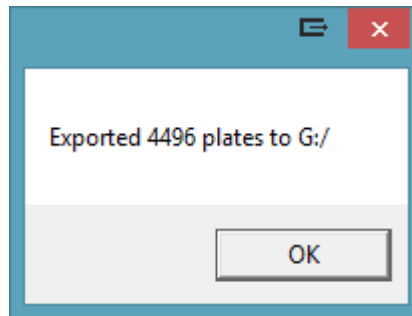
Now select the drive that is assigned to the memory stick. This only has to be done once; the next time you do the export, EasyVFR will scan all drives to see if there is a folder \PFMSData\Plates present on the stick and use that. (If you have accidentally selected the wrong drive, just remove that folder and EasyVFR will again ask you which drive next time).





Then the actual export will take place. Depending on the downloaded content of your personal EFB this can take a significant amount of time (even up to a few hours)! Subsequent exports will be a lot faster since only changed documents since the last preparation need to be converted again.

When the export is completed the following message will be shown:



## 5. Done.

You can now remove the memory stick from your computer and insert it into your SkyView. No special installation is required on the SkyView but you need to make sure you're using the latest available firmware.



In your SkyView, just browse for info for an airfield and choose the [Charts] Tab.

**IMPORTANT:** A SkyView does not have sufficient memory to hold the plates. The memory stick should remain plugged in, or the plates will not be available. For a 2-panel setup, you're allowed to copy the stick onto a second stick and insert that in your #2 panel. The #2 panel will authenticate with the #1 panel at system start, and you will be able to use the plates on either panel.